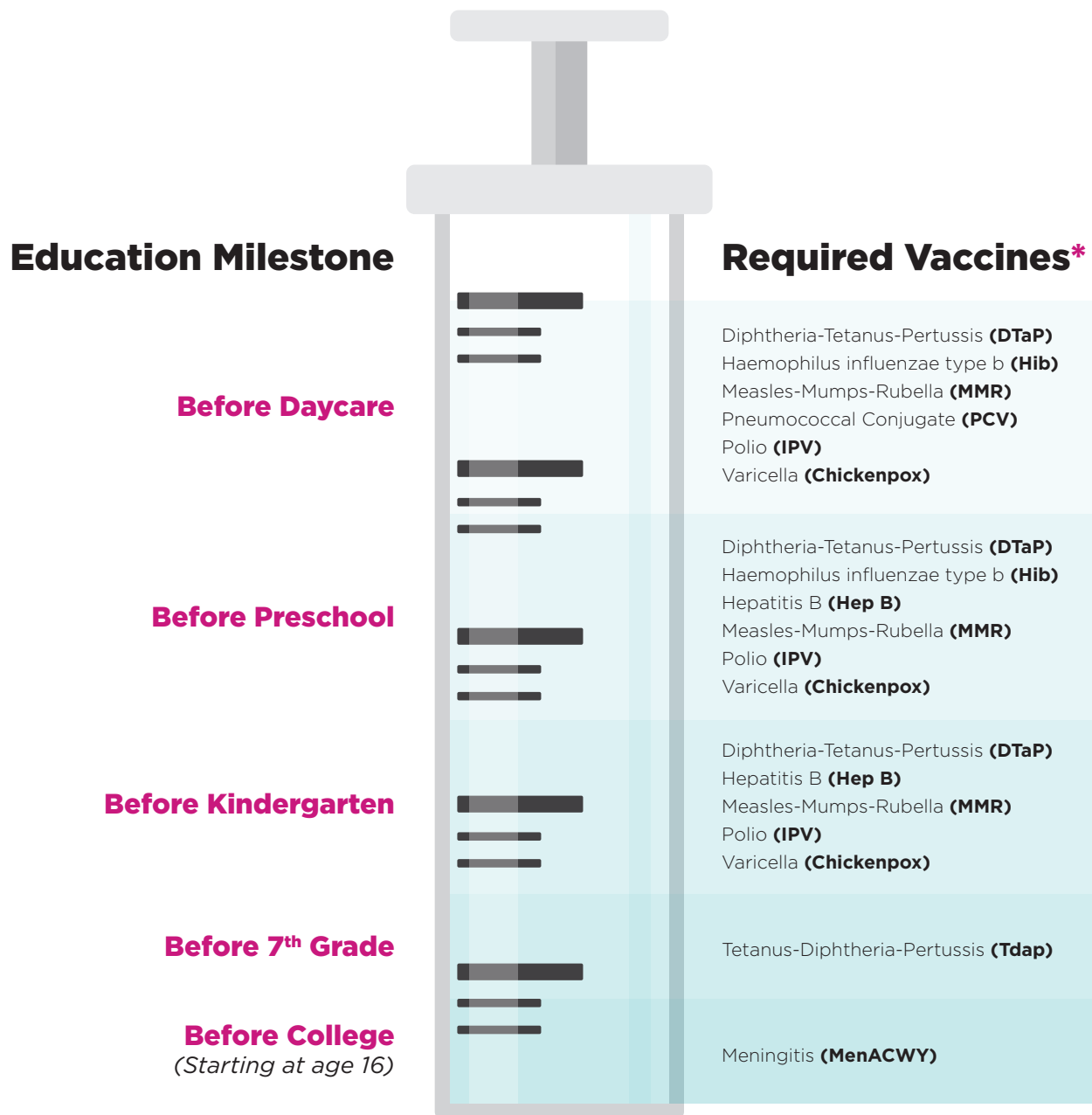


Back-to-School Immunization Schedule

Florida requires certain vaccines to be administered **before** children may enroll and attend school.

Source: [Florida Department of Health](#)



*Exemptions are made if immunizations are in conflict with the religious tenets and practices of the child's parent or guardian. This exemption is issued by a County Health Department (CHD) and based on established religious beliefs or practices only.